



MONTHLY MEMBERSHIP PROGRESS REPORT

District 128

Results as of: 04/30/2019

GMT: JOOST PAIJMANS

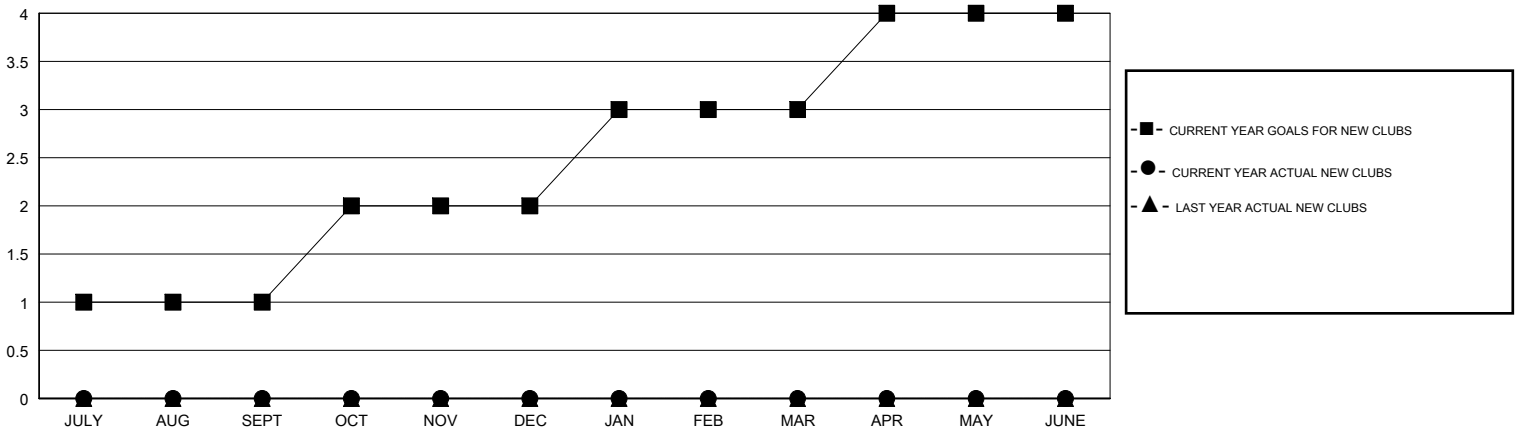
LOCATION ISRAEL

GMT CA

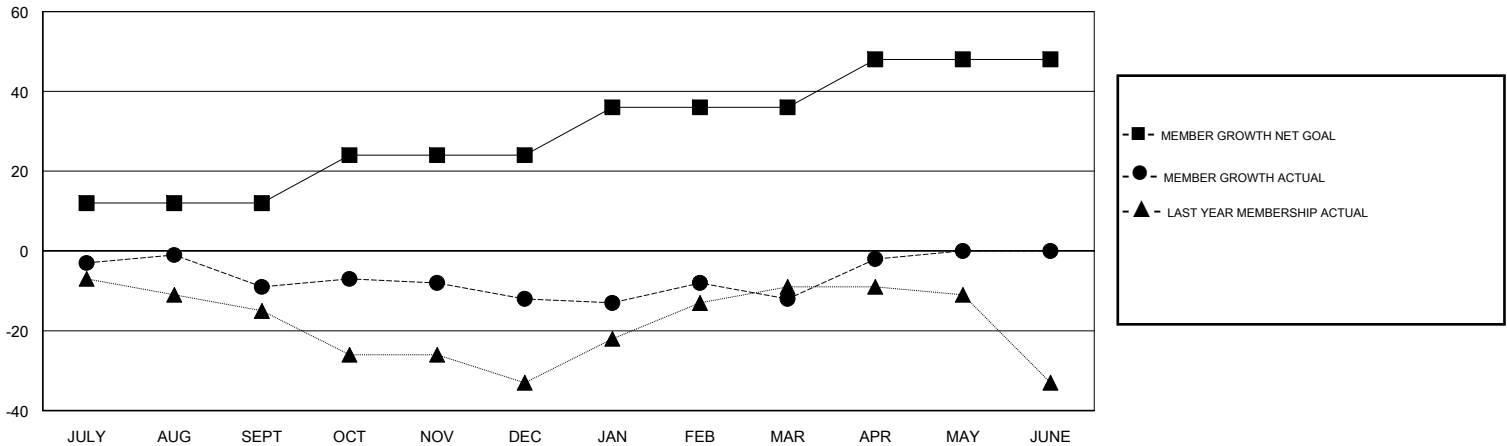
Clubs			
RESULTS FOR 2018-2019			
QUARTER	NEW CLUB GOAL	NEW CLUBS	DROPPED CLUBS
JULY/AUG/SEPT	1	0	0
OCT/NOV/DEC	1	0	0
JAN/FEB/MAR	1	0	0
APR/MAY/JUNE	1	0	0

Members			
RESULTS FOR 2018-2019			
QUARTER	MEMBER GROWTH NET GOAL	MEMBER GROWTH ACTUAL	DROPPED MEMBERS ACTUAL (including transfers)
JULY/AUG/SEPT	12	13	16
OCT/NOV/DEC	12	11	12
JAN/FEB/MAR	12	11	11
APR/MAY/JUNE	12	11	1

GOALS AND ACTUAL NEW CLUBS CUMULATIVE



GOALS AND ACTUAL MEMBERS CUMULATIVE



DROPPED CLUBS: 0

11 CLUBS OF 26 ADDED 1 OR MORE NEW MEMBERS

GENDER DISTRIBUTION	
MALE	331 (43.21%)
FEMALE	435 (56.79%)
Women Percentage Fiscal Year Goal: 20%	

DROPPED MEMBERS	
DECEASED	6
CLUB CANCELLED	0
OTHER	34
TOTAL	40

[CLICK HERE FOR CUMULATIVE MEMBERSHIP DATA](#)

TOTAL FAMILY UNIT MEMBERS	500
FAMILY MEMBERS PAYING HALF DUES	250